



# VAJRAM TIARA



## ABOUT VAJRAM

---

2.6

Million sq.ft  
delivered

5

Million sq.ft  
in the pipeline

1000+

Happy  
Families

10+

Years in the  
industry

---

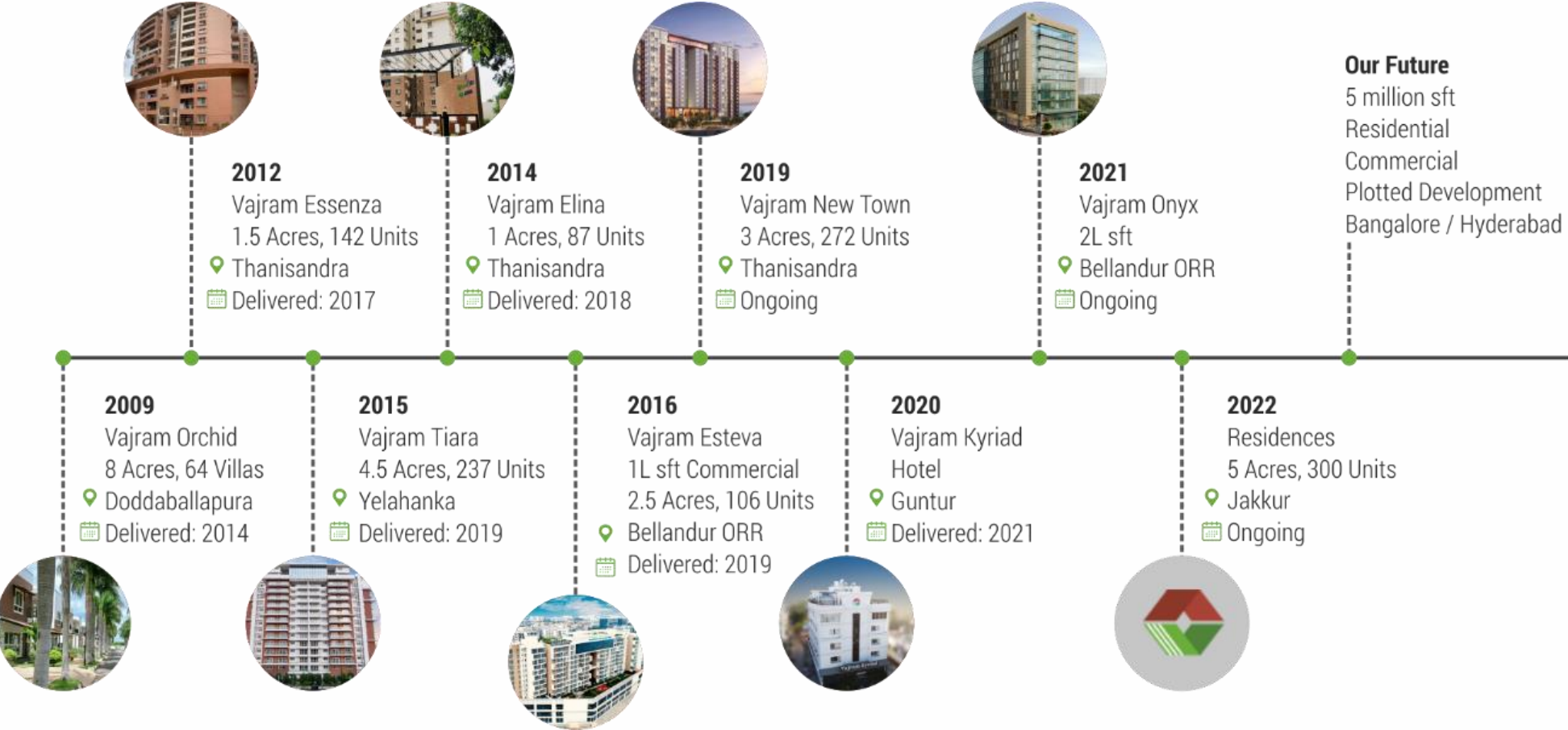
### A Decade of Quality Construction

Established in 2009, Vajram group is the new generation Bengaluru based Real Estate Company. We have a committed passion for creating functional, user-centric, environmentally sustainable spaces using materials of the highest quality and engineering excellence.

Vajram's "Customer First" thinking is shaped by the value systems imbibed firmly in all our projects, from the blueprint to brick. With the unwavering confidence in the mantra that 'only good quality and great design stands the test of time,' we have successfully delivered to 1000+ happy customers.



# OUR JOURNEY



## OVERVIEW

---

Vajram Tiara is the epitome of prestige, influence, luxury, beauty, and affluence. This foundation of stature is pristinely set on 4.5 acres in the bustling community of Yelahanka. Tiara epitomizes a luxurious sense of arrival and tranquil yet lavish living with it's 265 spacious luxury apartments. Inspired by the natural environment, Tiara promotes sprawling landscapes and a dynamic, sustainable residential structure with 1 acre of amenities. Meticulous zoning and a clear distinction between private and public area within the apartment complex invokes a sense of security and comfort.





## AMENITIES



Library



Multisport Court



Skating Rink



Beach Volley ball



Meditation & Yoga Garden



Acupressure Walkway



Aromatic Garden



Badminton & Squash Court



Banquet Hall



AV Room



Luxury Infinity Pool & Sauna



Business Centre



Cricket Net



Gym & Aerobics



½ Basketball Court



Indoor Games





## LOCATION

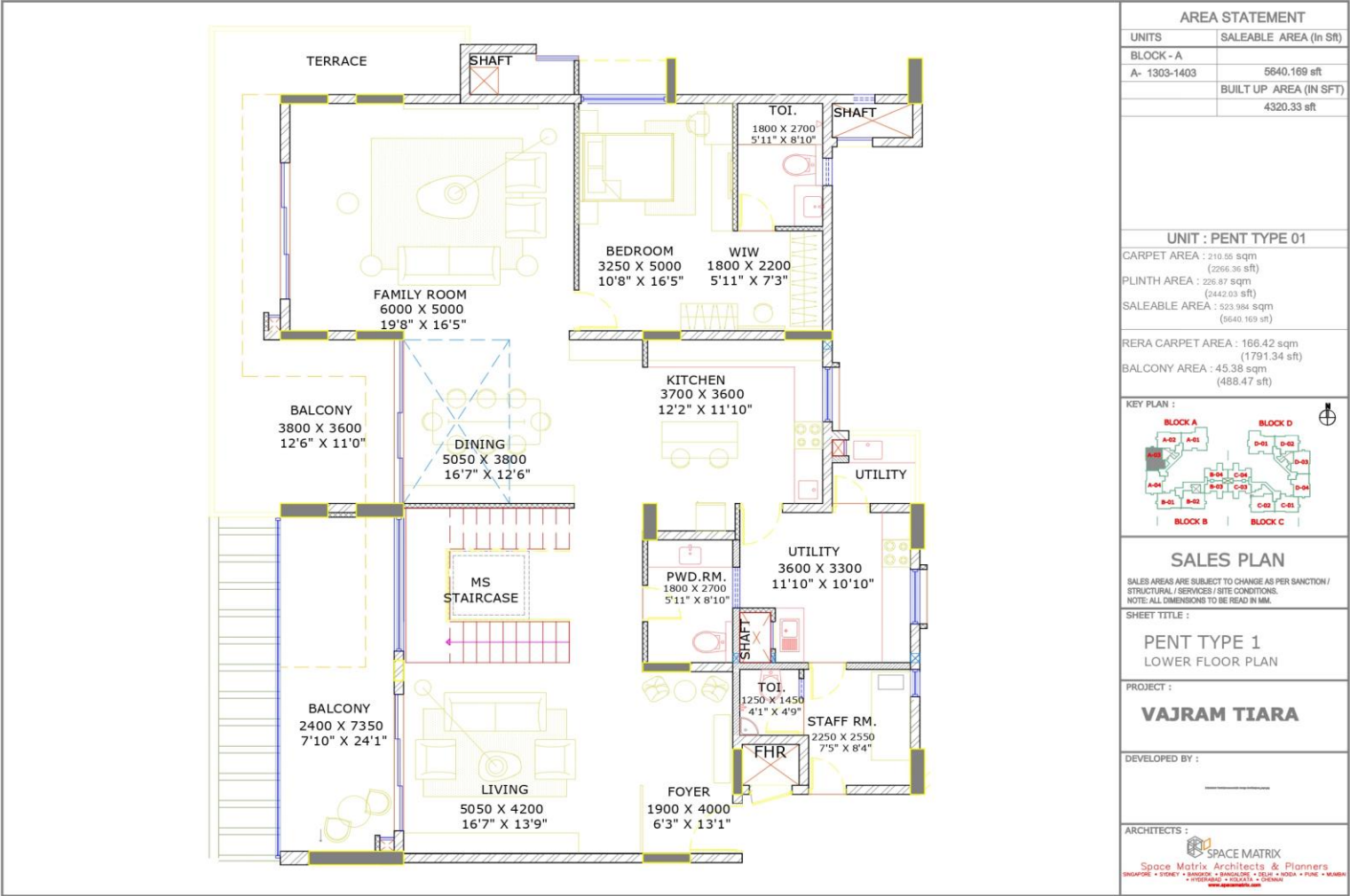
North Bengaluru is now the prime location to live and invest in because it has features of an ideal location, including land availability, top-of-the-line public amenities and excellent connectivity to the airport and several IT parks (Manyata, KTC Hubs, & Ecopolis). Vajram Tiara is nestled across 4.5 acres in Yelahanka, a low-congestion zone. Apart from the prime location accessibility to schools, hospitals, and work hubs; Vajram Tiara has perfected the concept of idealistic living spaces and areas for your home forever.





# PENT HOUSE

## Lower Floor Plan

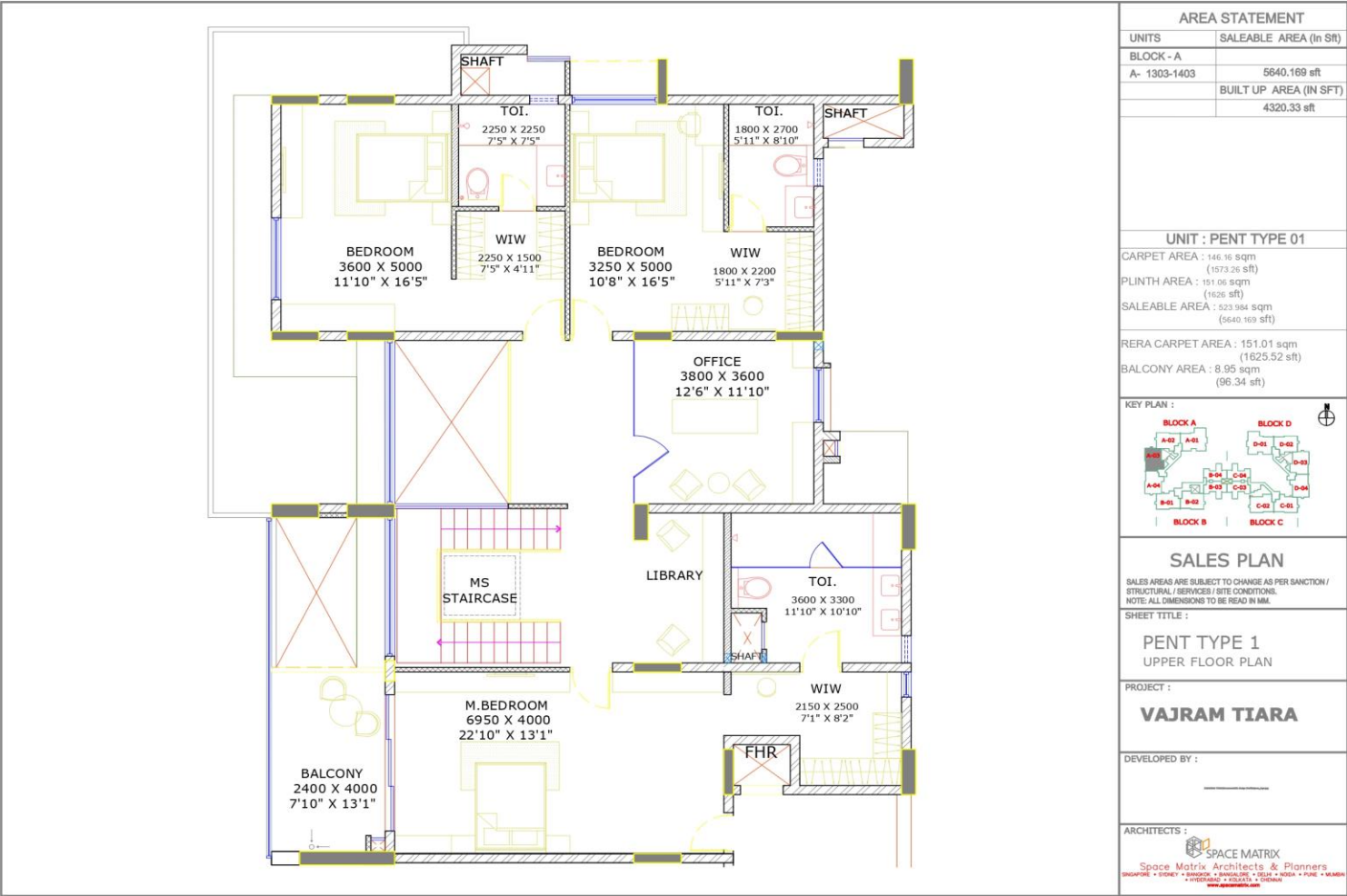






# PENT HOUSE

## Upper Floor Plan

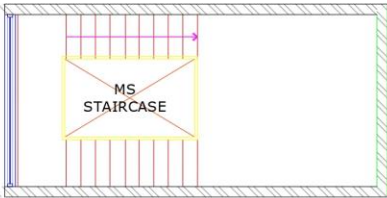







# PENT HOUSE

## Terrace Plan

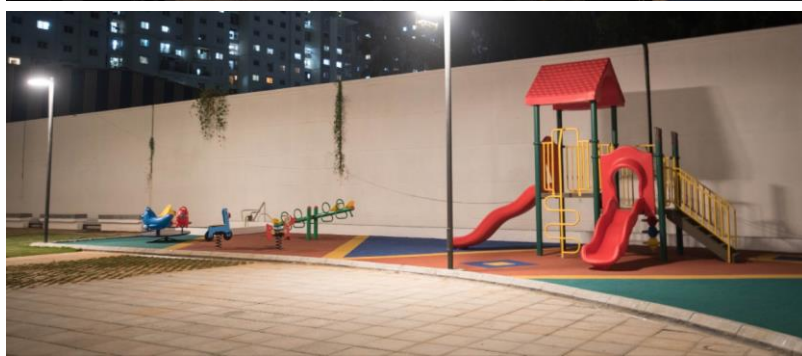
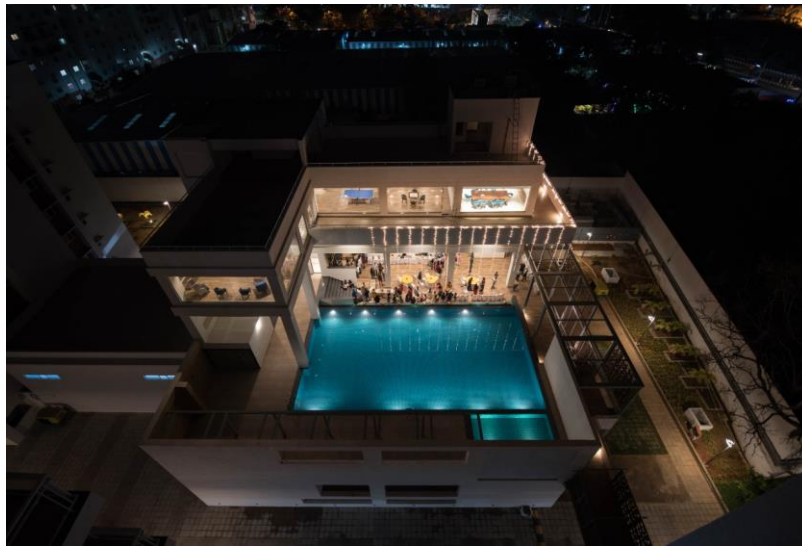


AREA STATEMENT	
UNITS	SALEABLE AREA (In Sft)
BLOCK - A	
A- 1303-1403	5640.169 sft
	BUILT UP AREA (IN SFT)
	4320.33 sft
UNIT : PENT TYPE 01	
CARPET AREA : 19.2 sqm (206.67 sft)	
PLINTH AREA : 23.44 sqm (252.30 sft)	
SALEABLE AREA : 523.964 sqm (5640.169 sft)	
RERA CARPET AREA : 19.2 sqm (206.67 sft)	
BALCONY AREA : 0	
KEY PLAN :	
SALES PLAN	
SALES AREAS ARE SUBJECT TO CHANGE AS PER SANCTION / STRUCTURAL / SERVICES / SITE CONDITIONS. NOTE: ALL DIMENSIONS TO BE READ IN MM.	
SHEET TITLE :	
PENT TYPE 1 TERRACE FLOOR PLAN	
PROJECT :	
VAJRAM TIARA	
DEVELOPED BY :	
ARCHITECTS :	
 SPACE MATRIX Space Matrix Architects & Planners SINGAPORE • SINGAPORE • BANGALORE • CHENNAI • COIMBATORE • HYDRABAD • KOLKATA • MUMBAI www.spacematrix.com	





## GALLERY

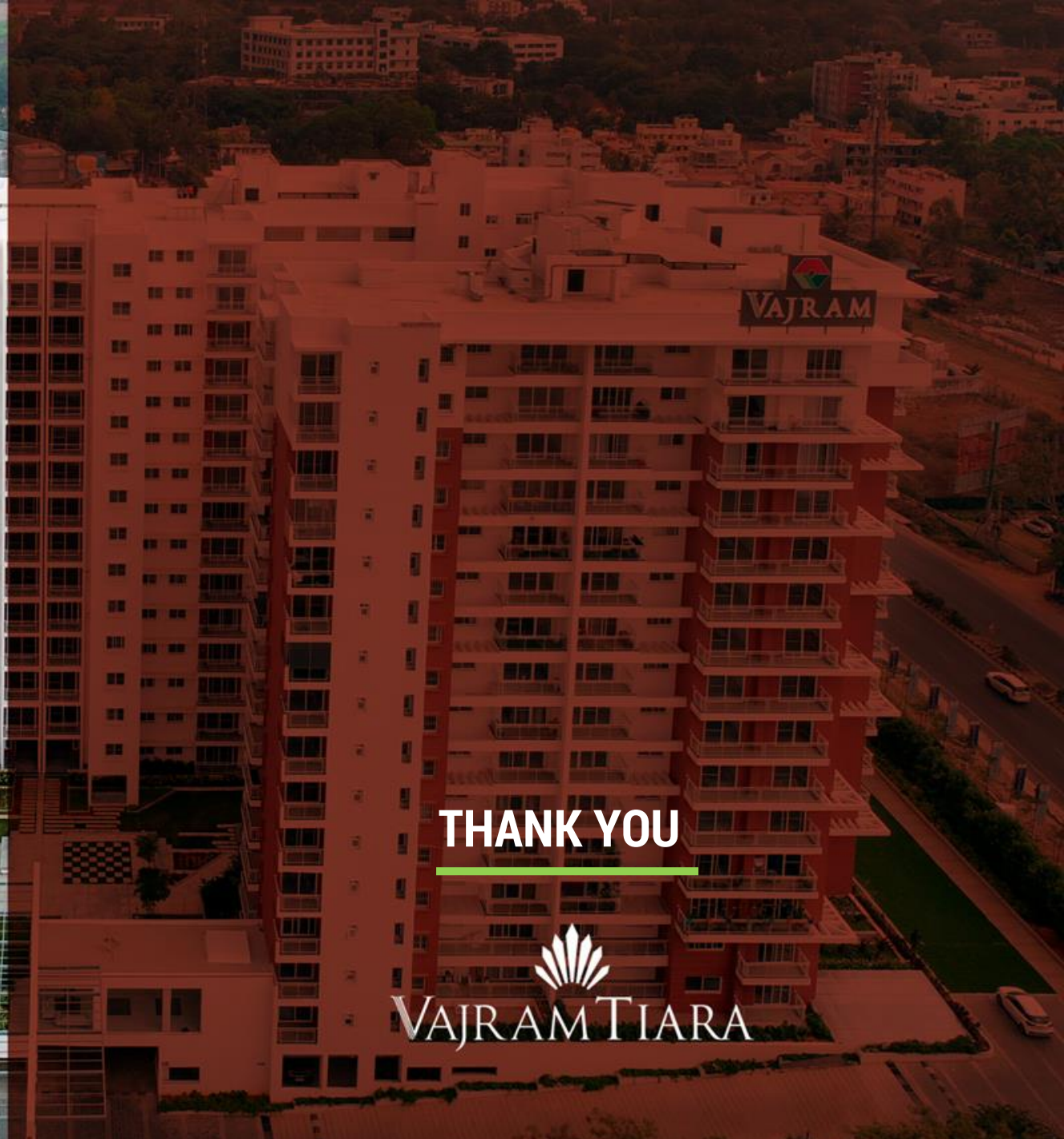




# TESTIMONIALS







THANK YOU

VAJRAM TIARA